

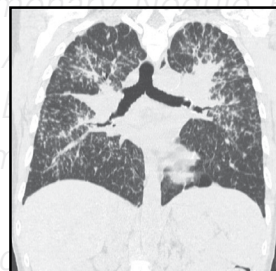
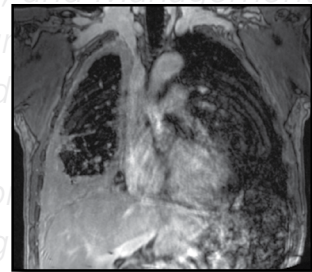
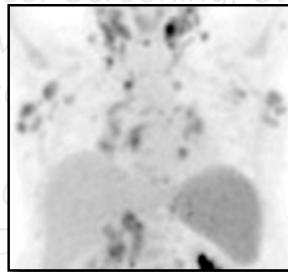
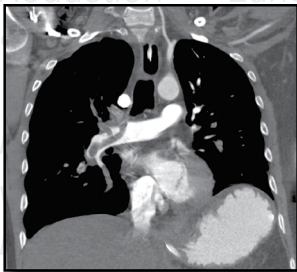
November 3 - 5, 2014

**Marriott Boston Long Wharf
Boston, MA**

Chest Imaging

Program Directors

Jo-Anne O. Shepard, MD • Andetta R. Hunsaker, MD • Amita Sharma, MD



Massachusetts General Hospital
Brigham and Women's Hospital
Departments of Radiology
Harvard Medical School

FACULTY

COURSE DIRECTORS

Jo-Anne O. Shepard, MD

Professor of Radiology, Harvard Medical School
Director of Thoracic Imaging and Intervention,
Massachusetts General Hospital

Andetta R. Hunsaker, MD

Associate Professor of Radiology, Harvard Medical School
Director, Division of Thoracic Imaging and Intervention,
Brigham and Women's Hospital

Amita Sharma, MD

Assistant Professor of Radiology, Harvard Medical School
Assistant Radiologist, Division of Thoracic Imaging and
Intervention, Massachusetts General Hospital

INVITED SPEAKERS

David Lynch, MD

Professor of Radiology, Co-Director, Division of Radiology,
National Jewish Health, Denver, Colorado

Smita Patel, MD

Associate Professor of Radiology, Division of Cardiothoracic
Radiology, University of Michigan Health System,
Ann Arbor, Michigan

William D. Travis, MD

Attending Thoracic Pathologist, Department of Pathology,
Memorial Sloan Kettering Cancer Center, New York, New York

Mylene T. Truong, MD

Professor, Department of Diagnostic Radiology, The University
of Texas M. D. Anderson Cancer Center, Houston, Texas

HARVARD MEDICAL SCHOOL

Gerald F. Abbott, MD

Associate Professor of Radiology, Harvard Medical School
Attending Radiologist, Division of Thoracic Imaging and
Intervention, Massachusetts General Hospital

Jeanne B. Ackman, MD

Instructor in Radiology, Harvard Medical School
Associate Radiologist, Director of Thoracic MRI,
Division of Thoracic Imaging and Intervention,
Massachusetts General Hospital

Garry Choy, MD, MBA

Instructor in Radiology, Harvard Medical School
Staff Radiologist, Divisions of Cardiovascular and Thoracic
Imaging and Intervention, Massachusetts General Hospital

Subba R. Digumarthy, MD

Assistant Professor of Radiology, Harvard Medical School
Assistant Radiologist, Division of Thoracic Imaging and
Intervention, Massachusetts General Hospital

Florian J. Fintelmann, MD

Instructor in Radiology, Harvard Medical School
Assistant Radiologist, Division of Interventional Radiology,
Massachusetts General Hospital

Efren J. Flores, MD

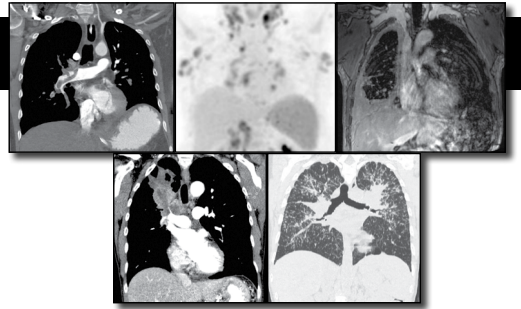
Instructor in Radiology, Harvard Medical School
Assistant Radiologist, Division of Thoracic Imaging and
Intervention, Massachusetts General Hospital

Ritu R. Gill, MD

Assistant Professor of Radiology, Harvard Medical School
Department of Radiology, Brigham and Women's Hospital

Matthew D. Gilman, MD

Assistant Professor of Radiology, Harvard Medical School
Associate Director, Division of Thoracic Imaging and
Intervention, Associate Director, Cardiothoracic Imaging



Hiroto Hatabu, MD, PhD

Professor of Radiology, Harvard Medical School
Clinical Director MRI Program, Medical Director, Center for
Pulmonary Functional Imaging, Department of Radiology,
Brigham and Women's Hospital

Francine L. Jacobson, MD, MPH

Assistant Professor of Radiology, Harvard Medical School
Division of Thoracic Imaging and Intervention, Brigham and
Women's Hospital

Manudeep K. Kalra, MD

Associate Professor of Radiology, Harvard Medical School
Radiologist, Division of Thoracic Imaging and Intervention,
Massachusetts General Hospital

Michael Lanuti, MD

Assistant Professor of Surgery, Harvard Medical School
Director, Thoracic Oncology, Division of Thoracic Surgery,
Massachusetts General Hospital

Inga T. Lennes, MD

Instructor in Medicine, Harvard Medical School
Director of Clinical Quality, MGH Cancer Center, Director,
Survivorship Program, Massachusetts General Hospital

Rachna Madan, MD

Instructor in Radiology, Harvard Medical School
Division of Thoracic Imaging and Intervention, Brigham and
Women's Hospital

Theresa C. McLoud, MD

Professor of Radiology, Harvard Medical School
Vice-Chair for Education, Thoracic Radiologist, Division of
Thoracic Imaging and Intervention, Massachusetts General
Hospital

Victorine V. Muse, MD

Assistant Professor of Radiology, Harvard Medical School
Associate Radiologist, Division of Thoracic Imaging and
Intervention, Massachusetts General Hospital

Milena Petranovic, MD

Instructor in Radiology, Harvard Medical School
Assistant Radiologist, Massachusetts General Hospital

Lecia V. Sequist, MD, MPH

Associate Professor of Medicine, Harvard Medical School
Center for Thoracic Oncology, Massachusetts General
Hospital

Sarabjeet Singh, MD, MMST

Lecturer of Radiology, Harvard Medical School
Assistant in Research, Massachusetts General Hospital

Andrew M. Tager, MD

Associate Professor of Medicine, Harvard Medical School
Associate Physician, Massachusetts General Hospital

Beatrice Trotman-Dickenson, MD

Assistant Professor of Radiology, Harvard Medical School
Division of Thoracic Imaging and Intervention, Brigham and
Women's Hospital

Henning Willers, MD

Associate Professor of Radiation Oncology, Harvard Medical School
Associate Radiation Oncologist, Massachusetts General
Hospital

Carol C. Wu, MD

Assistant Professor of Radiology, Harvard Medical School
Assistant Radiologist, Division of Thoracic Imaging and
Intervention, Massachusetts General Hospital

COURSE DESCRIPTION

The rapidly expanding subspecialty of Thoracic Radiology creates a challenge for physicians to stay current. The three-day chest course will include symposia dedicated to the multi-disciplinary assessment and management of lung cancer, lung cancer screening, the approach to HRCT and interstitial lung diseases and acute cardiothoracic imaging. New modalities including PET-CT, MRI, Dual energy CT and dose reduction strategies will be presented.

Chest Radiology is no longer a field where a chest x-ray is the sole modality of imaging. The specialty is now much more comprehensive and includes Computed Tomography, PET-CT Magnetic Resonance Imaging and Interventional procedures. Interventional work includes obtaining adequate tissue for molecular analysis in the growing field of personalized medicine for lung cancer. The Radiologist's role is expanding significantly in these areas and there is increasing need to work effectively in a multi-disciplinary team to optimize patient management and outcome. The recent guidelines on Lung cancer screening will increase demand and utilization of thoracic CT.

LEARNING OBJECTIVES

Upon completion of this activity, participants will be able to:

- Describe the updated classification and staging algorithm of lung cancer
- Interact more effectively with other physicians involved in lung cancer management
- Evaluate HRCT examinations using a structured anatomical approach
- Use CT appropriately in the evaluation of acute chest pain
- Avoid pitfalls in the interpretation of PET-CT in the thorax
- Apply new imaging parameters on scanners in order to dramatically reduce radiation dose in all patients

ACCREDITATION

The Harvard Medical School is accredited by the Accreditation Council for Continuing Medical Education to provide continuing medical education for physicians.

The Harvard Medical School designates this live activity for a maximum of 22.5 AMA PRA Category 1 Credits™. Physicians should claim only the credit commensurate with the extent of their participation in the activity.

The Royal College of Physicians and Surgeons of Canada recognizes conferences and workshops held outside of Canada that are developed by a university, academy, hospital, specialty society or college as accredited group learning activities.

AMA PRA Category 1 Credits™ claimed by physicians attending live events certified and organized in the United States for AMA PRA Category 1 Credits™ can be claimed through the agreement on mutual recognition of credits between UEMS and AMA, considered as being equal to the European Continuous Medical Education Credits (ECMEC®) granted by the UEMS.

One AMA PRA Category 1 Credits™ is equivalent to one (1) hour of European EACCME Credit (ECMEC®), therefore up to 22.5 ECMEC® Credits are available. Each medical specialist should claim only those hours of credit that he/she actually spent in the educational activity.

ACGME COMPETENCIES

This course is designed to meet one or more of the following Accreditation Council of Graduate Medical Education competencies:

- Patient care
- Medical knowledge
- Practice-based learning and improvement

REGISTRATION INFORMATION

Tuition Fee: \$800.00(USD)

Reduced Fee for Residents, Fellows in Training, and Allied Health Professionals: \$545.00 (USD)

Registration by credit card (VISA, American Express or MasterCard) can be made at:

www.cme.hms.harvard.edu/courses/chestimaging

Registration by check (draft on a United States bank), please make payable to [Harvard Medical School](#) and mail with registration form to [Harvard Medical School-Department of Continuing Education, PO Box 41747625, Boston, MA 02241-7476](#). Telephone or fax registration is not accepted. Registration with cash payment is not permitted. Upon receipt of your paid registration an email confirmation from the HMS-DCE office will be sent to you. Be sure to include an email address that you check frequently. Your email address is used for critical information including: registration confirmation, evaluation and certificate.

INQUIRIES

By phone 617-384-8600, Monday-Friday, 9 AM to 5 PM (EST) or by email at: hms-cme@hms.harvard.edu

ONLINE INFORMATION

To register or view activity information online, visit:

www.cme.hms.harvard.edu/courses/chestimaging

To ensure proper registration, please add the source code found at the bottom of this registration form.

DISCLOSURE POLICY

Harvard Medical School (HMS) adheres to all ACCME Essential Areas, Standards, and Policies. It is HMS's policy that those who have influenced the content of a CME activity (e.g. planners, faculty, authors, reviewers and others) disclose all relevant financial relationships with commercial entities so that HMS may identify and resolve any conflicts of interest prior to the activity. These disclosures will be provided in the activity materials along with disclosure of any commercial support received for the activity. Additionally, faculty members have been instructed to disclose any limitations of data and unlabeled or investigational uses of products during their presentations.

REFUND POLICY

A handling fee of \$60 is deducted for cancellation. Refund requests must be received by postal mail, email or fax one week prior to this activity. No refunds will be made thereafter.

COURSE LOCATION

All sessions will be held at the Marriott Boston Long Wharf, 296 State Street, Boston, MA 02109.

ACCOMMODATIONS

Hotel rooms in Boston are limited. You are urged to make your reservations early. A limited number of rooms have been reserved at the Marriott Boston Long Wharf, (800) 228-9290 or (617) 227-0800 until Friday, October 10, 2014. Please specify that you are enrolled in the Chest Imaging course to receive a reduced room rate. For reservations go to: www.marriott.com/boslw. Please enter code: **chicha** in Special Rates and Awards.

TRAVEL

Please do not make non-refundable airline reservations until your enrollment in the course has been confirmed. You can make your airline reservation by calling the HMS Travel Desk toll free 1(877) 4-HARVMD (1-877-442-7863) Monday - Friday 9 AM - 8 PM (EST). From outside the U.S., Canada and Virgin Islands, please call (617) 559-3764.

Monday, November 3, 2014

THORACIC ONCOLOGY SYMPOSIUM

Moderator: Jo-Anne Shepard, MD

Lung Cancer Multidisciplinary Approach

7:00 - 7:45	Registration/Continental Breakfast	
7:45 - 8:15	The New Classification of Adenocarcinoma	William Travis, MD
8:15 - 8:45	Difficult Lung Cancers	William Travis, MD
8:45 - 9:15	Risk Stratification of Lung Nodules	Theresa McLoud, MD
9:15 - 9:45	Radiologic Staging of Lung Cancer	Subba Digumarthy, MD
9:45 - 10:00	BREAK	
10:00 - 10:30	Surgical Staging of Lung Cancer	Michael Lanuti, MD
10:30 - 11:00	Advances in Lung Cancer Management: Oncology	Lecia Sequist, MD
11:00 - 11:30	The Evolving Role of Stereotactic Body Radiation Therapy in NSCLC	Henning Willers, MD
11:30 - 12:00	Multi-disciplinary Panel	Digumarthy, Lanuti, Sequist, Willers
12:00 - 12:30	Unknown Cases	Florian Fintelmann, MD
12:30 - 1:30	Lunch Recess <i>(on your own)</i>	

Lung Cancer Screening

1:30 - 1:50	Lung Cancer Screening - The Facts	Theresa McLoud, MD
1:50 - 2:10	Lung Cancer Screening - Creating a Screening Program	Francine Jacobson, MD, MPH
2:10 - 2:30	Lung Cancer Screening - Standardized Reporting	Jo-Anne Shepard, MD
2:30 - 2:50	Lung Cancer Screening - A Clinician's Approach	Inga Lennes, MD
2:50 - 3:30	Lung Cancer Screening: Panel Questions and Answers Moderator: Victorine Muse, MD	McLoud, Jacobson, Shepard, Lennes
3:30 - 3:45	BREAK	
3:45 - 4:15	Lung Nodule Biopsy	Jo-Anne Shepard, MD
4:15 - 4:45	Lymphoma	Victorine Muse, MD
4:45 - 5:15	Mediastinal Tumors	Andetta Hunsaker, MD
5:15 - 5:30	Questions and Answers	
5:30	ADJOURN	

Tuesday, November 4, 2014

INTERSTITIAL LUNG DISEASE SYMPOSIUM

Moderator: Amita Sharma, MD

HRCT: A Pattern Based Approach - SA-CME

7:15 - 8:00	Continental Breakfast	
8:00 - 8:30	HRCT Anatomy	Gerald Abbott, MD
8:30 - 9:00	The Reticular Pattern on HRCT	David Lynch, MD
9:00 - 9:30	The Nodular Pattern on HRCT	David Lynch, MD
9:30 - 10:00	The Cystic Pattern on HRCT	Beatrice Trotman-Dickinson, MD
10:00 - 10:15	BREAK	
10:15 - 10:45	The Increased Attenuation Pattern on HRCT	Carol Wu, MD
10:45 - 11:15	The Pulmonologists approach to ILD	Andrew Tager, MD
11:15 - 12:00	ILD Quiz/Multi-disciplinary Approach Moderator: Amita Sharma, MD	Lynch, Tager, Abbott
12:00 - 12:30	Unknown Cases	Milena Petranovic, MD
12:30 - 1:30	Lunch Recess <i>(on your own)</i>	

HRCT: Specific Diseases - SA-CME

1:30 - 2:00	Collagen Vascular Diseases And Vasculitis	David Lynch, MD
2:00 - 2:30	Smoking Related Interstitial Lung Disease	Amita Sharma, MD
2:30 - 3:00	Occupational and Environmental Lung Diseases	David Lynch, MD
3:00 - 3:30	Drug related Interstitial Lung Disease	Ritu Gill, MD
3:30 - 3:45	BREAK	
3:45 - 4:15	Large Airways Disease	Efren Flores, MD
4:15 - 4:45	Small Airways Disease	Gerald Abbott, MD
4:45 - 5:00	Questions and Answers	
5:00	ADJOURN	

Program changes/substitutions may be made without notice.

Wednesday, November 5, 2014

ACUTE CHEST SYMPOSIUM

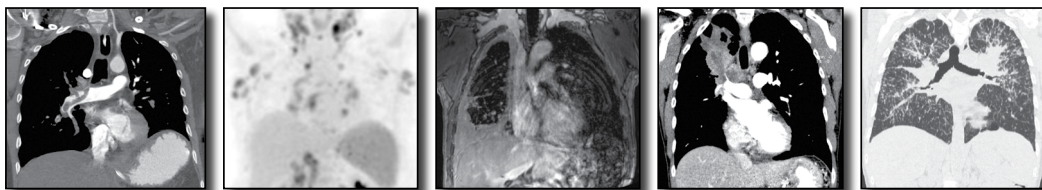
Moderator: Andetta Hunsaker, MD

Acute Chest - SA-CME

7:15 - 8:00	Continental Breakfast	
8:00 - 8:30	Acute Pulmonary Embolus Imaging	Smita Patel, MD
8:30 - 9:00	Evaluation of the Coronary Arteries In the Emergency Room	Smita Patel, MD
9:00 - 9:30	Non-Vascular Chest Trauma	Garry Choy, MD
9:30 - 10:00	Vascular Chest Trauma	Smita Patel, MD
10:00 - 10:15	BREAK	
10:15 - 10:45	ICU Radiology	Matthew Gilman, MD
10:45 - 11:15	The Post-operative Chest	Rachna Madan, MD
11:15 - 11:45	Acute Aortic Syndromes	Smita Patel, MD
11:45 - 12:30	Unknown Cases Panel Moderator: Jo-Anne Shepard, MD	Patel, Gilman, Truong, Madan
12:30 - 1:30	Lunch Recess <i>(on your own)</i>	

Emerging Technologies - SA-CME

1:30 - 2:00	MRI of the Thymus - Value Added	Jeanne Ackman, MD
2:00 - 2:30	Pitfalls in FDG-PET Imaging	Mylene Truong, MD
2:30 - 3:00	Dual Energy CT	Manudeep Kalra, MD
3:00 - 3:30	Advanced Strategies for Dose Reduction in CT	Sarabjeet Singh, MD
3:30 - 4:00	Functional COPD Imaging	Hiroto Hatabu, MD, PhD
4:00	ADJOURN	



November 3 - 5, 2014

Chest Imaging Course

Registration Form

Course # 341130

TUITION FEES			
Physician	\$800.00 (USD)	Residents*/Fellows in Training*/Technologists	\$545.00 (USD)
		Allied Health Professionals	\$545.00 (USD)

* A letter of verification from the Department Chair must accompany the registration form for a reduced trainee fee.

PLEASE PRINT CLEARLY - All fields are required.

Full Name

First

Middle Initial

Last

Address

Street

City

State

Zip Code

Please note: Your email address is used for critical information about the course including: registration confirmation, course evaluation and certificate. Please be sure to include an email address you check daily or frequently.

Daytime Phone

Fax #

E-Mail

☐ Please check if you want to be **excluded** from receiving email notices of future Harvard Medical School - Department of Continuing Education programs.

Profession

Primary Specialty (Physicians Only)

Degree

Board Certified:

☐Yes
☐No

Professional School Attended
(Physicians Only)

☐Harvard Medical School
☐U.S. Medical School
☐International Medical School

Yr of Grad

Online registrants - add the first three characters of the source code found here ⇨ Source Code: A B C D X Z Z Z



HARVARD MEDICAL SCHOOL
DEPARTMENT OF CONTINUING EDUCATION
P.O. Box 825
BOSTON, MA 02117-0825

Non-Profit Org.
U.S. Postage Paid
Boston, MA
Permit No. 55356

Chest Imaging

KEY TOPICS

- *Lung Cancer Screening, Staging, and Management*
- *Pulmonary Nodule Evaluation*
- *Diffuse Lung Disease: A Multidisciplinary Approach*
- *HRCT*
- *Airways Disease*
- *Coronary and Aortic Imaging*
- *Pulmonary Embolism*
- *ICU Radiology*
- *Vascular and Non-vascular Trauma*
- *FDG-PET Imaging*
- *Thoracic MRI*
- *Dual Energy CT*
- *Radiation Dose Reduction*

Visit www.cme.hms.harvard.edu/courses/chestimaging to register

November 3 - 5, 2014 • Marriott Boston Long Wharf, Boston, MA