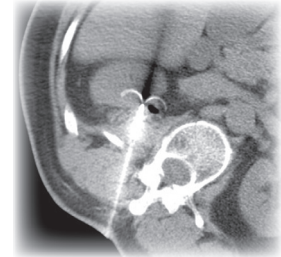
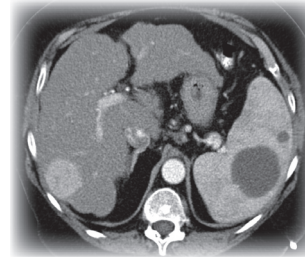




Harvard Medical School
Department of Continuing Education



Brigham and Women's Hospital
Department of Radiology



VISITING OBSERVERSHIP ABDOMINAL IMAGING AND INTERVENTION

Dates Available Upon Request

Contact Danielle Klette

617-525-7330

dklette@partners.org

Fellowship Directors

Koenraad J Morteale, MD

*Associate Professor of Radiology,
Harvard Medical School*

Stuart G Silverman, MD

*Professor of Radiology,
Harvard Medical School*

DESCRIPTION

The Division of Abdominal Imaging and Intervention at Harvard Medical School (Brigham and Women's Hospital) offers a five-day Visiting Fellowship training program in Abdominal Imaging and Intervention. This program is designed to expose the participant to a wide range of abdominal and pelvic CT scans, MRI exams, and interventional radiology procedures, including radiofrequency- and cryo-ablations. The Program curriculum includes participating in daily read-out sessions and observing interventional radiology procedures. In addition, daily case-based presentations by the Faculty, technical demonstrations, and informal discussions solidify the learning experience.

OBJECTIVES

To expose Visiting Fellows to a wide variety of abdominal and pelvic CT scans, MRI exams and interventional procedures. Special imaging exams include endorectal MRI, secretin-enhanced MRCP, CT colonography, CT enterography, and CT urography. Interventional radiology procedures performed at the Division of Abdominal Imaging and Intervention include fine needle aspiration biopsy, large needle (core) biopsy, catheter drainage of fluid collections, image-guided para- and thoracocentesis, and radiofrequency ablation and cryoablation of all organ systems including organs of the abdomen, pelvis, lung, and bone.

HARVARD MEDICAL SCHOOL
DEPARTMENT OF CONTINUING EDUCATION
PO Box 825
Boston, MA 02117-0825
www.cme.hms.harvard.edu



HARVARD MEDICAL SCHOOL FACULTY

John M Braver, MD: Assistant Professor of Radiology; Director, Gastrointestinal Radiology, Brigham and Women's Hospital (BWH)

Ramin Khorasani, MD, MPH: Associate Professor of Radiology; Vice Chairman, Department of Radiology, Director, Center for Evidence-Based Imaging, BWH

Koenraad J Morteale, MD: Associate Professor of Radiology; Associate Director, Division of Abdominal Imaging and Intervention, Director, Abdominal and Pelvic MRI, Medical Director, CME, BWH

M Raquel Oliva, MD, PhD: Instructor in Radiology; Staff Radiologist, Division of Abdominal Imaging and Intervention, BWH

Cheryl Sadow, MD: Instructor in Radiology; Staff Radiologist, Division of Abdominal Imaging and Intervention, BWH

Steven E Seltzer, MD, FACR: Philip H Cook Professor of Radiology; Chairman, Department of Radiology, BWH

Paul B Shyn, MD: Instructor in Radiology; Staff Radiologist, Division of Abdominal Imaging and Intervention, BWH

Stuart G Silverman, MD: Professor of Radiology; Director, Division of Abdominal Imaging and Intervention, Director, CT Scan, Director, Cross-Sectional Interventional Service, BWH

Servet Tatli, MD: Assistant Professor of Radiology; Staff Radiologist, Division of Abdominal Imaging and Non-Invasive Cardiovascular Imaging, BWH

Clare M C Tempany, MD: Professor of Radiology; Director, Clinical Focused Ultrasound, BWH

Kemal Tuncali, MD: Instructor in Radiology; Clinical Director, Interventional MRI; Director, Genitourinary Radiology Services; Assistant Director, Cross-Sectional Interventional Services, BWH

DAILY SCHEDULE

8:00	Abdominal Imaging Case Conference (All reading room)	12:15	Noon Conferences (Abrams conference room)
8:30	Faculty Readout (MDCT/ MRI) or Observing Cross-Sectional Imaging Guided Interventions (All reading room)	2:00	Faculty Readout (MDCT/ MRI) or Observing Cross-Sectional Imaging Guided Interventions (All reading room)
11:30	Lunch Recess	5:00	Adjourn Optional: Access to Electronic Teaching File and All Video-Lectures (Mellins Library)

REGISTRATION INFORMATION

For specific tuition fees, see the registration form. All foreign payments must be made by a draft on a United States bank, or by Visa or Mastercard. If paying by check, make it payable to Harvard Medical School and mail with the completed registration form to: **Harvard Medical School, Department of Continuing Education, PO Box 825, Boston, MA 02117-0825**. If paying by credit card, fax the completed registration form to (617) 384-8686, register online at www.cme.hms.harvard.edu/courses/observership, or mail it to the above address. **Telephone registrations are not accepted.** Inquiries should be directed to the above address, made by phone: (617) 384-8600, Monday-Friday, 10 am to 4 pm (EST), or by e-mail: hms-cme@hms.harvard.edu. Upon receipt of registration, a confirmation letter will be mailed to the address listed on the form.

Please note: Program changes/substitutions may be made without notice.

ACCREDITATION

Harvard Medical School is accredited by the Accreditation Council for Continuing Medical Education (ACCME) to provide continuing medical education for physicians.

Harvard Medical School designates this educational activity for a maximum of 41.25 AMA PRA Category 1 Credit(s)[™]. Physicians should only claim credit commensurate with the extent of their participation in the activity.

COURSE LOCATION

All sessions will be held at Brigham and Women's Hospital, Division of Abdominal Imaging and Intervention, Department of Radiology, 75 Francis Street, Boston, MA, 617-732-5500.

Hotel Rooms in the area

Brookline Courtyard Marriott, 40 Webster Street, Brookline, MA. (866) 296-2296

Best Western Boston, The Inn at Longwood, 342 Longwood Avenue, Boston, MA. (617) 731-4700

REFUND POLICY

A handling fee of \$60 is deducted for cancellation. Refund requests must be received by mail or fax one week prior to the course. No refunds will be made thereafter.

Abdominal Observership

Fee \$1,500 (one week)

Course #302483

Dates Attending _____

PLEASE PRINT CLEARLY

First _____ Middle Initial _____ Last _____

Street _____

City _____ State _____ Zip Code _____

Daytime Phone _____ Fax Number _____

Email Address Please check if you wish to be excluded from receiving email notices of future Harvard HMS-DCE programs

Professional School Attended _____ Year of Graduation _____

Profession _____

Principal Specialty _____ Board Certified: Yes ___ No ___

Organization Affiliation _____

CHECK IS ENCLOSED

Please make your check payable to *Harvard Medical School* and mail it with this registration form to: **HMS-DCE, PO Box 825, Boston, MA 02117-0825**

Registrations paid by credit card may be made online at:
www.cme.hms.harvard.edu/courses/observership

Online Registrants - to ensure proper registration, please add the first three characters of the source code found here:

Source Code: X Z Z